

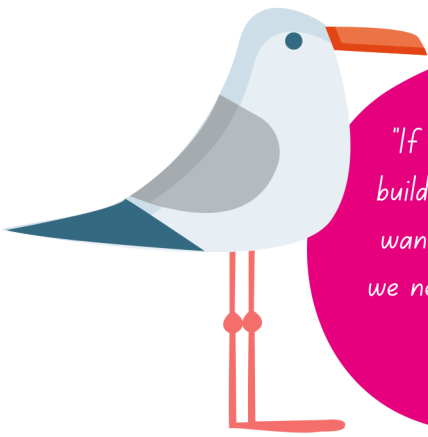
East Lothian's new Local Development Plan

(we call it the LDP for short)



This leaflet provides
information on the
council's new LDP.

wild spaces
health + wellbeing
environment
sport facilities
homes
accessible spaces
bike paths
schools
parks
creative spaces
climate
energy
nature
villages
public transport



"If we didn't have a plan, people could build anything they liked, wherever they wanted! That wouldn't be fair because we need to think about everyone's needs and wishes for where we live."

What is a Local Development Plan?

Every area in Scotland has to make an LDP.

It is a plan for how East Lothian can be changed, developed and protected for the next ten years.

In the plan we try to think about things that affect everyday life. Things like:

- ✓ **public transport** (buses and trains)
- ✓ **new houses**
- ✓ **schools**
- ✓ **parks**
- ✓ **bike paths**
- ✓ **roads**



We also think about protecting land and conserving special spaces that are important for nature and wildlife, for relaxing and for tourists to visit. That can be places like beaches, countryside, wild spaces, parks and historical environments.

About the new East Lothian LDP

The plan we are working on now is for ten years;
from 2023 until 2033.

How old are you this year - 2023?



How old will you be in 2033?



Local Development Plans are all about the places you grow up, where you go out to play, learn, work and perhaps have your own family one day.

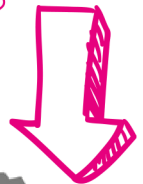
So the big themes it includes are:

- ✓ **Climate change**
- ✓ **Nature crisis**
- ✓ **Health and wellbeing**
- ✓ **The places we live**

Our plan is for the whole of East Lothian.

Planners get to make maps. We ♥ maps! Do you?

Can you point to the area where you live?



What do you think about these important themes?

How do they affect your life?

How would you like things to be in the future?



We might see you in school in September!

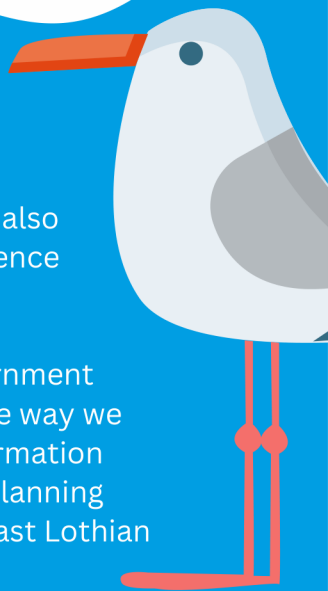
We are organising creative sessions for children in ten East Lothian primary schools to look at the LDP in more detail.

East Lothian Play Association (ELPA) will be running these to think about things like planning, towns, housing and countryside – and how they all join together!

What happens next?

The thoughts and ideas we gather from children (and adults) will help us write the new LDP. We will also be looking at information from the public and evidence we already have or get from experts.

We will send this information to the Scottish Government for them to check we have involved everyone in the way we should. It takes quite a long time to put all the information together. The draft of the LDP (which will include planning policies and maps) should be ready for people in East Lothian to see by the end of 2024.



How can the general public share their views on the LDP?

By visiting us online at: www.eastlothian.gov.uk/ldp2

have your say



The National Planning Framework 4 (NPF4) is a long term plan for Scotland. Local Development Plans are part of this.