



# choose play

east lothian play association

SC050202

Susan Humble,  
Development Programme Lead  
[susan@elpa.org.uk](mailto:susan@elpa.org.uk)



## Today I'll be talking about:

Introduction to Choose Play (ELPA)

Our experience of engaging and consulting directly with children - what we base our work on

Developing our own creative participatory practice

Recent work engaging with children for the Local Development Plan

Recent work engaging with disabled children for Play Sufficiency Assessments

A partnership approach

Ensuring audience and influence

Sum up with key points

"What inspiring and thoughtful responses from our children. It has been a great process to be involved in."

*Head teacher*





## Choose Play, East Lothian Play Association

We are a local, county level play association, aiming to support a culture of play in East Lothian.

We work locally and connect nationally and internationally.

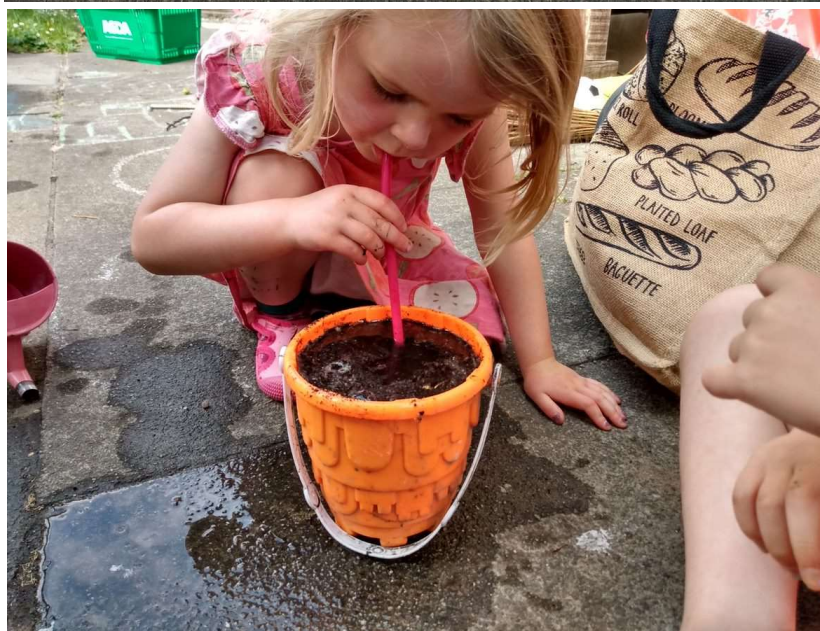
We delivery

- high quality play opportunities and events
- training
- consultancy and engagement
- campaigns.



A vibrant poster for "Pop-Up Adventure Play" set against a background of a wooden play structure. The poster features a large, colorful, multi-colored banner at the top with the text "Pop-Up Adventure Play". Below this, a photograph shows a play area with a tent, a hammock, and a blue tarp. To the right, a small inset photo shows a large stone building, identified as Cockenzie House &amp; Garden. Text on the poster includes the location "Cockenzie House &amp; Garden, 22 Edinburgh Road, EH32 0L", the dates "Monday 31st July" and "Tuesday 1st August", and the time "10am - 3pm". A circular badge states "open-access FREE just pop along!". Logos for "East Lothian Council" and "Cockenzie PLAY" are also present. At the bottom, a blue banner lists activities: "Den building, hammocks, costume making, water play &amp; more!" and "Suitable for all ages – children, families &amp; friends welcome." Social media handles for Facebook (@EastLothianPlayAssociation) and Instagram are shown, along with the text "ELPA, Scottish Charitable Incorporated Organisation".







# Erasmus+ Loose Parts Play Project

**"It transforms the  
playground before  
your eyes."**



<https://www.loosepartsplayproject.eu/>



Co-funded by the  
Erasmus+ Programme  
of the European Union





# Spark the Park Tranent

Free, fun and friendly  
Everyone welcome!



**choose play**

east lothian play association

SC050202



**Wednesday 3rd and 10th July  
3-5pm**

**16th July - 10th August  
Tuesdays, Wednesdays and  
Saturdays 12-5pm**

Look out for the big  
box of surprises! The  
green space  
between Tranent  
library and Lindores  
Drive  
EH33 1AJ

DEN BUILDING,  
GAMES, WATER PLAY,  
ART, DRESS UP AND  
PICNICS.

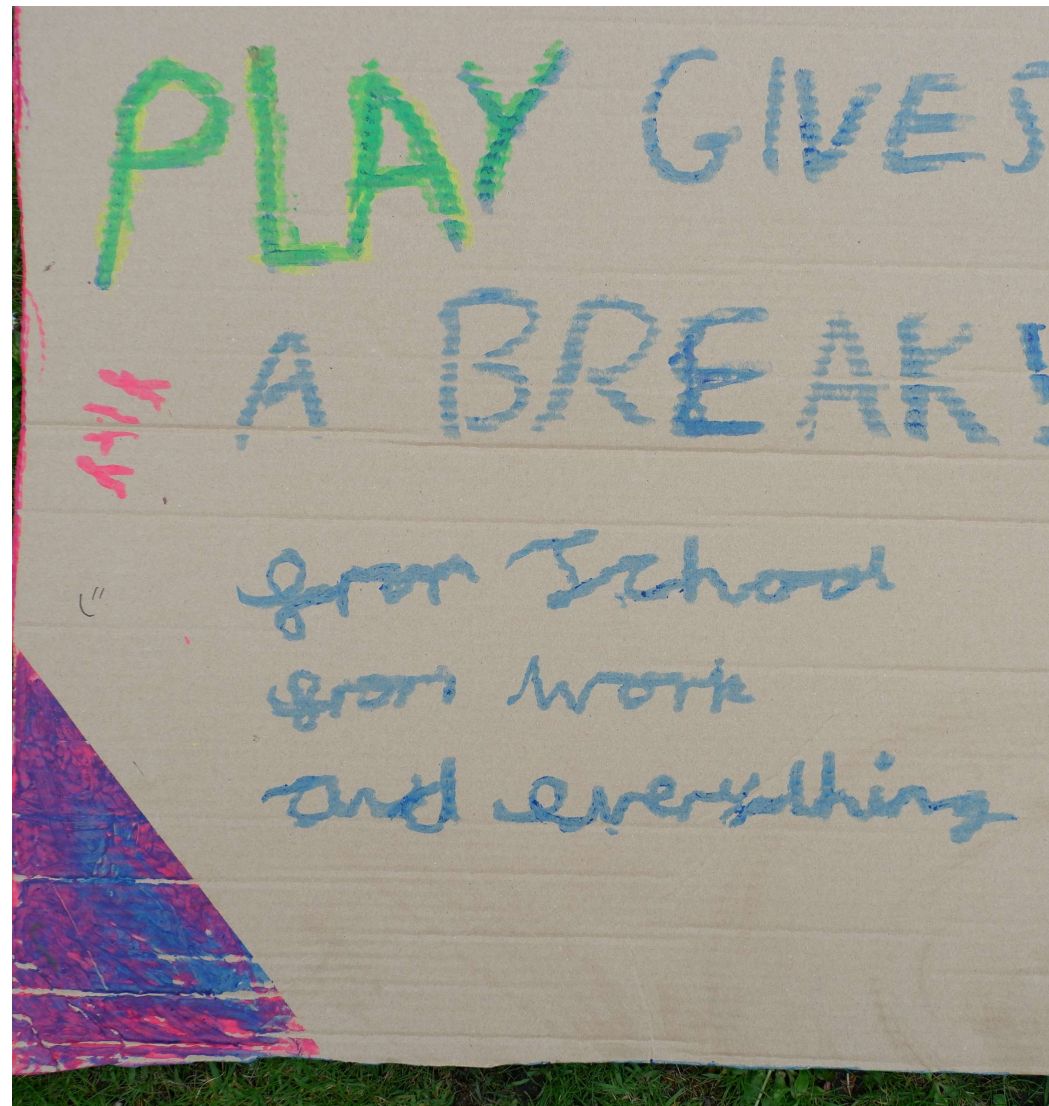


Scan for full programme or  
visit [www.elpa.org.uk](http://www.elpa.org.uk)

East Lothian Play Association  
SCIO SC050202

Follow us @EastLothianPlay  
Supported by Fa'side Area Partnership,  
Thrive Outdoors, Pontin House Trust







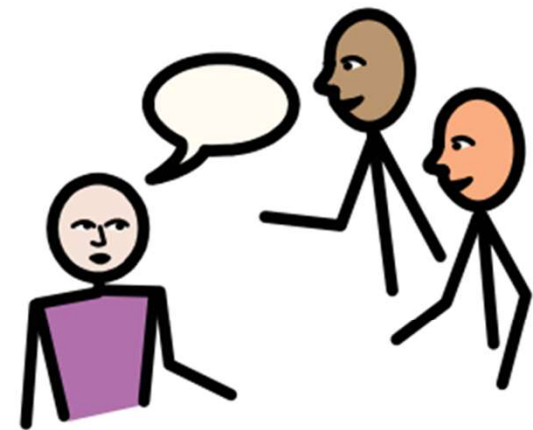
## UN Convention on the Rights of the Child



31

I have a right to relax and play

## UN Convention on the Rights of the Child



Children Young Peoples  
Commissioner Scotland.  
[Symbols Cards](#)

12

I have the right to be listened to, and taken seriously



Children's  
COMMISSIONER





# The Lundy Model

This model provides a pathway to help conceptualise Article 12 of the UNCRC. It focuses on four distinct, albeit interrelated, elements. The four elements have a rational chronological order.



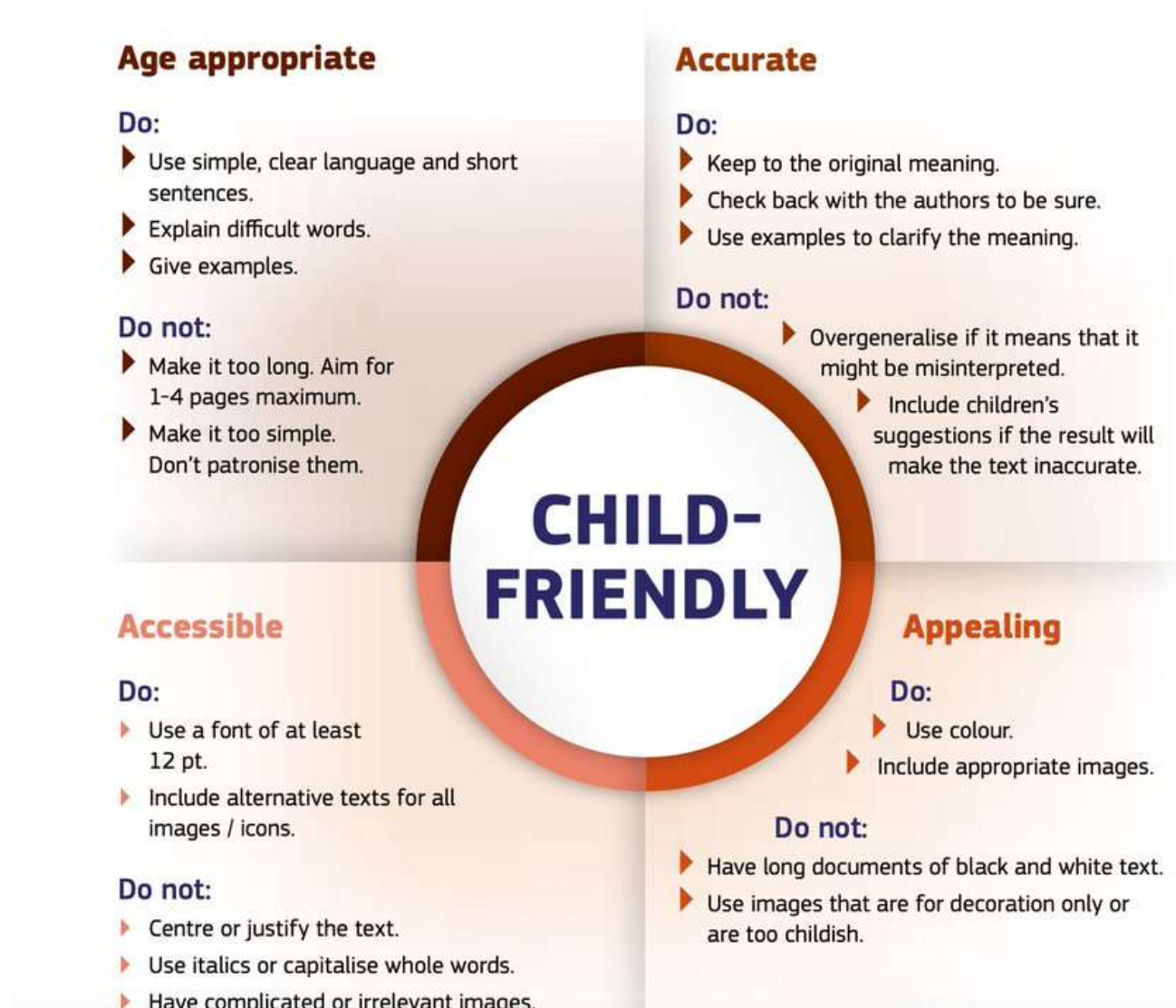
- The Lundy model of Child Participation was established in 2014
- The model suggests that implementation of Article 12 of the United Nations Convention on the Rights of the Child (CRC) requires consideration of four inter-related concepts: Space, voice, Audience and Influence.
- Its implementation has generated a sea-change in global understanding of child rights-based participation for both policy and practice.





# Child friendly information

Space – children and young people must be given safe and inclusive opportunities to form and express their views.





# Local Development Plan consultation in East Lothian

<https://youtu.be/Fzx2w6HvmDs?si=Lp85yhI00zIRtEXP>



## We might see you in school in September!

We are organising creative sessions for children in ten East Lothian primary schools to look at the LDP in more detail.

East Lothian Play Association (ELPA) will be running these to think about things like planning, towns, housing and countryside – and how they all join together!

## What happens next?

The thoughts and ideas we gather from children (and adults) will help us write the new LDP. We will also be looking at information from the public and evidence we already have or get from experts.

We will send this information to the Scottish Government for them to check we have involved everyone in the way we should. It takes quite a long time to put all the information together. The draft of the LDP (which will include planning policies and maps) should be ready for people in East Lothian to see by the end of 2024.

## How can the general public share their views on the LDP?

By visiting us online at: [www.eastlothian.gov.uk/ldp2](http://www.eastlothian.gov.uk/ldp2)

The National Planning Framework 4 (NPF4) is a long term plan for Scotland. Local Development Plans are part of this.

## About the new East Lothian LDP

The plan we are working on now is for ten years; from 2023 until 2033.

How old are you this year - 2023?

How old will you be in 2033?

Local Development Plans are all about the places you grow up, where you go out to play, learn, work and perhaps have your own family one day.

So the big themes it includes are:

- ✓ Climate change
- ✓ Nature crisis
- ✓ Health and wellbeing
- ✓ The places we live

Our plan is for the whole of East Lothian.

Planners get to make maps. We ♥ maps! Do you?

Can you point to the area where you live?

What do you think about these important themes? How do they affect your life? How would you like things to be in the future?



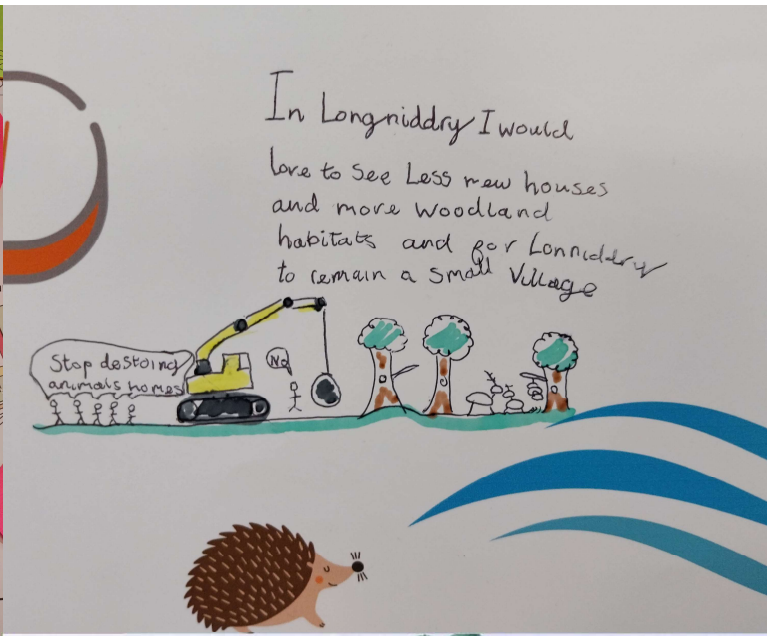


# Creative consultation

Voice – children and young people must be facilitated to express their views.









If you had a magic wand, how would you make this play space better?

# Play Space



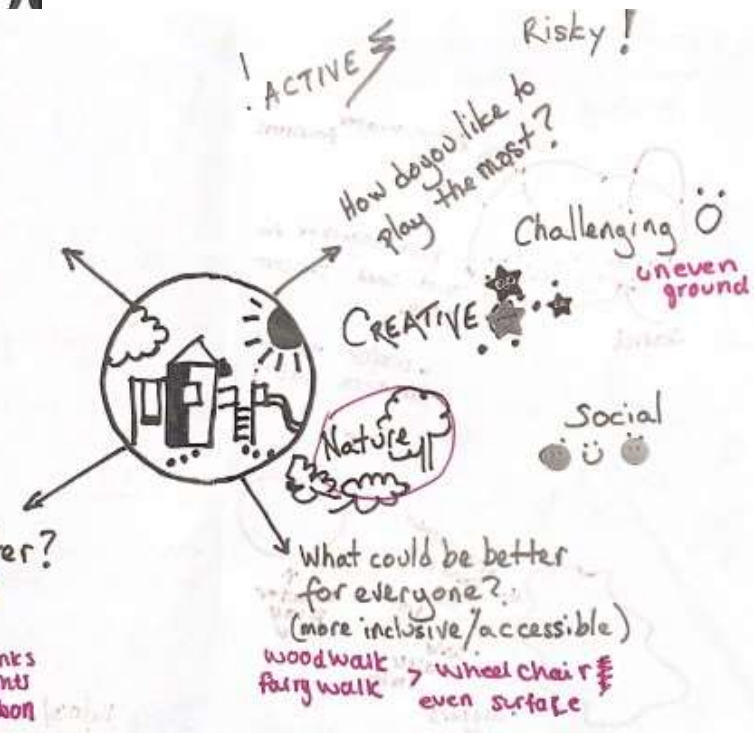
Name of

Name of  
choose or draw

Date 14/3/23

What do you like best?  
Bark

What could be better?  
wee sand pit  
water station  
Interactive board: suns  
light ribbon  
tattle board  
busy board





# Partnerships

Choose Play  
East Lothian Council – Amenity Services, Education  
Department and Planning  
Can Do  
Queen Margaret University



What could be better?  
a big huge swing!! 😊  
a basket swing







P 4 PLAY



# Creating a Play-Friendly Community with Children

A Report on a Participatory-Ethnographic Research



Silvia Veiga-Seijo, with  
Prof. Roger Hart & Prof.  
John McKendrick

Watch here the films:

[www.youtube.com/@CreatingaPlayFriendlyCommunity](http://www.youtube.com/@CreatingaPlayFriendlyCommunity)



Article 12 – the right to have views given due weight.

Audience – the views must be listened to.

Influence – the views must be acted upon, as appropriate.



**The basket swing and baby swings are back: "Cause us!!"**



# Key points

- Use creative methods to make consultation fun, playful and inclusive
- Work in partnership with colleagues and third sector organisations
- Ensure children's views are presented to decision makers as well as within their communities and in child friendly formats to children themselves
- Act upon children's views and share with children the ways their views are making a difference.

