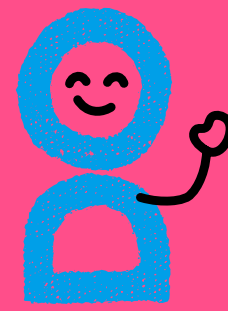




Location Information

CAN



east lothian
play association

Whitecraig Playpark

Space accessible via Whitecraig Crescent.



Whitecraig

WINTER POP-UP PLAY DAY

at Whitecraig Playpark

Thursday

29th Dec

12pm - 3pm



ELPA SCIO, Scottish Charitable Incorporated Organisation (SCIO) SC050202
Can-Do, Scottish Charitable Incorporated Organisation (SCIO) SC049885

Whitecraig Playpark

Space accessible via Whitecraig Crescent.



Parking

There is a small car park next to the Playpark close to where the activities will be running. It can sometimes be a bit muddy but there is flat tarmac leading up to the car park where vehicles can stop if needed.

Public Transport

Lothian Buses, East Coast Buses and Prentice Coaches run buses to Whitecraig. We recommend Traveline Scotland for up-to-date information.

Toilets

There are no public toilets at the park.

Wheelchair Access

The main surfaces are large grassy areas with wide paths that take you across the space. As well as the Playpark there is also a flat tarmac sports area. Our activities will be located on and near the paths and the sports area.

Seating and Benches

There are some seating options in the park.
PlayCan will have a couple of folding chairs available.

Things to be aware of

- Wrap up warm for the weather. We'll have active games to keep warm and a tent for shelter. We also have spare jackets and gloves if you forget to bring yours or need an extra layer!
- This is a spacious green park which is mainly enclosed by hedges, walls and fences.
- There are a few entrances into the park.
- The space is open to members of the public, who may have dogs with them.
- Whitecraig Playpark is a fairly 'typical' enclosed play area with wood chip surfaces, including equipment for climbing, toddler swings, a flying fox.

PlayCan Resources

Team PlayCan will bring a range of resources including 'loose parts' play kit, percussion, pots & pans, large tent, shelter, tuff trays, chalk, parachute, sensory resources. There will be staff from team PlayCan there to welcome you, and to support and facilitate play!





WE WOULD LOVE FOR YOU TO...

Come along to play with your children and family.

Give us ideas to make things work better.

Give us feedback – what works? what doesn't?

Help us shape the next stages of the project!

**If you would like further information,
or to let us know you plan to come along
contact hello@can-do.scot**