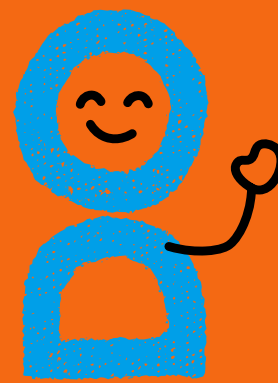




CAN



east lothian
play association

PLAY CAN

Inclusive outdoor play for children and young people with ASN, friends and families.

PLAY CAN include us all

funded by





OUR GOAL



PLAY CAN hopes to spark new ways of thinking to ensure children and families are offered play opportunities appropriate to their needs and feel included in their local community spaces.

FREE, FUN & FRIENDLY 😊

PLAY CAN runs outdoor play sessions in local parks and green spaces across East Lothian.

ELPA and Can Do staff will be there with inclusive resources and activities to support play for the whole family.

Dates and locations for PlayCan sessions will be announced on Can Do & ELPA's websites and social media pages alongside information about each of the session locations.

Keep an eye out for announcements!

WE WOULD LOVE FOR YOU TO...

Come along to play with your children and family.

Give us ideas to make things work better.

Give us feedback – what works? what doesn't?

Help us shape the next stages of the project!

PLAYCAN